



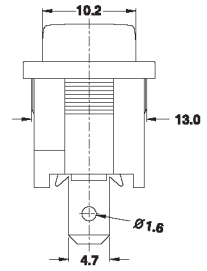
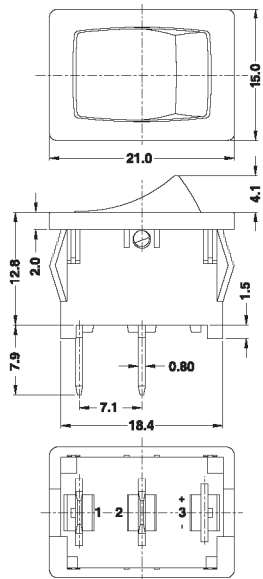
SR-06 Series

ROCKER SWITCH



Specification:

3A	250VAC	T85	T125/55	5E4		3A	250VAC	T125		
6(3)A	250VAC	T85	T125/55			6A	125VAC	T125		
6.5A	250VAC	T85	T125/55	15E3		6.5A	250VAC	T125		
8A	250VAC	T85	T125/55			13A	125VAC	T125		
10(3)A	250VAC	T85		5E4		8A	250VAC	T125		
13A	250VAC	T85				16A	125VAC	T125		
6(6)A	250VAC	T85								



Suggested panel hole size

Panel thickness	x
0.75-1.25	19.2
1.25-2.0	19.4
2.0-3.0	19.6



SR-06

Function	Current	Terminal Type	Base Type	Base Color	Button Color	Button Type	Printing	Color of Printing	Lamp Voltage	Internal Use Only	
A ON-OFF	S 3A 250VAC	Q	1	BK Black	BK Black	1	0 None	0 None	0 None	Internal Use Only	
B ON-ON	6A 125VAC	Q	1	WT White	WT White	1	1	1 White	1 12V		
C ON-OFF-ON	M 6.5A 250VAC	Q1	2	GE Grey	GE Grey	2	2	2 Black	2 24V		
D (ON)-OFF	13A 125VAC	Q1	2	RE Red	RE Red	2	3	3 Red	3 110V		
E ON-(OFF)	H1 10(3)A 250VAC	Q2	2	GR Green	GR Green	3	4	4 Blue	4 220V		
F ON-(ON)	6(3)A 250VAC 5E4	Q2	2	BL Blue	BL Blue	3	5	5 Yellow	5 2V		
M ON-OFF-(ON)	16A 125VAC	Q2	2	OR Orange	OR Orange	5	6	6	6 6V		
X (ON)-OFF-(ON)	H2 8A 250VAC	S	2	YE Yellow	AM Amber	5	7	7	7 36V		
N ON-OFF w/lamp (Unswitched neutral)	10(3)A 250VAC	S	2	YE Yellow	AM Amber	7	8	8	8 48V		
L 13A 250VAC	16A 125VAC	S1	2				9	9			
							8	8			
Y ON-OFF w/LED lamp	H3 10(3)A 250VAC	P1	2				A	A			
	6(6)A 250VAC 5E4						P2	2			
I Indicator	16A 125VAC	P2	2				B	B			
							P3	2			
							P6	2			