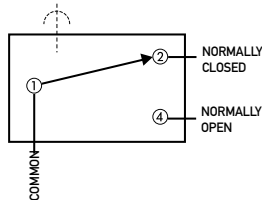


# X3

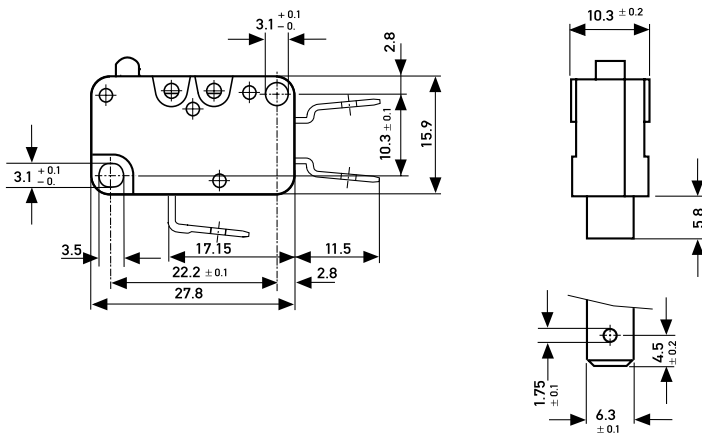
## Specifications

Housing	Thermoplastic
Plunger	Thermoplastic
Mechanism	Snap-action, single pole beryllium bronze blade mechanism with wiping contacts
Contact carrier	Brass
Contacts	Fine silver (Ag), silver nickel (AgNi10), gold-plated (Au), silver cadmium oxide (AgCd0)
Terminals	Solder, Faston and RAST 5 terminals
Temperature range °C	Between -40°C and +125°C
Mechanical life	minimum cycles X3L: $10^5$ /X3M: $10^6$ /X3C: $2 \cdot 10^6$ (Actuation: sinusoidal and maximum up to 80% of the overtravel)
Protection	Enclosure IP40
Mounting	Side mounting via mounting holes
Actuators	Stainless steel

Circuit diagram



Dimensions



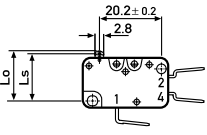
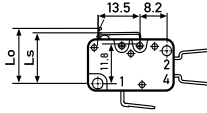
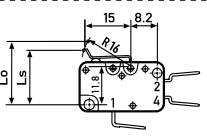
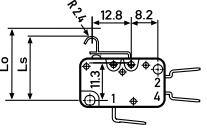
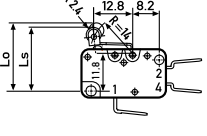
## Recommended maximum electrical ratings

	Voltage (VAC)	Resistive load (A)	Motor load (A)	Approvals ENEC (A)	(VAC)	Approvals UL (A)	(VAC)	Motor load
X3M	250	16	6	16 (6)	5E4	20,5	250	1½ HP
						20,5	125	½ HP
X3C	250	10	3	10 (3)	5E4	12	250	½ HP
						12	125	½ HP
X3L	250	21	8	21 (8)	1E4	21	250	2 HP
						21	125	1 HP

Current breaking capacities in the tables refer to Ag/AgNi10 contacts with the exception of X3L Ag/AgCd0

# X3

## Operating Characteristics

Actuator	Reference	Actuating Force Maximum		Release Force Minimum		Free Position Maximum		Operating Position		Movement Differential		Full overtravel position			
		(N)	(ozf)	(N)	(ozf)	(mm)	(in)	(mm)	(in)	(mm)	(in)	(mm)	(in)		
Plunger 	X3C3	0.8	2.877	0.05	0.179	15.75	0.62	14.7	+0.2	0.578	+0.008	0.25	0.009	13.2	0.52
	X3M3	1.6	5.755	0.2	0.719	15.75	0.62	14.7	-0.4	0.578	-0.006	0.25	0.009	13.2	0.52
J02 Lever 	X3C3 ..	0.8	2.877	0.045	0.161	16.5	0.649	15.1 ± 0.5	0.59 ± 0.02		0.35	0.014	14	0.55	
	X3M3..	2	7.193	0.18	0.647	16.5	0.649	15.1 ± 0.5	0.59 ± 0.02		0.35	0.014	14	0.55	
Width of lever 7.0 mm/0.28 in															
M02 Lever 	X3C3 ..	0.5	1.798	0.04	0.143	19.2	0.755	17.5 ± 0.7	0.69 ± 0.028		0.35	0.014	16.4	0.65	
	X3M3..	1.65	5.934	0.16	0.575	19.2	0.755	17.5 ± 0.7	0.69 ± 0.028		0.35	0.014	16.4	0.65	
Width of lever 7.0 mm/0.28 in															
L02 Lever 	X3C3 ..	0.8	2.877	0.045	0.161	21.8	0.858	20.5 ± 0.6	0.81 ± 0.024		0.35	0.014	19.5	0.76	
	X3M3..	2	7.193	0.19	0.683	21.8	0.858	20.5 ± 0.6	0.81 ± 0.024		0.3	0.011	19.5	0.76	
Width of lever 7.0 mm/0.28 in															
T02 Lever 	X3C3 ..	0.8	2.877	0.045	0.161	21.8	0.858	20.2 ± 0.7	0.79 ± 0.028		0.35	0.014	19.3	0.76	
	X3M3..	2	7.193	0.19	0.683	21.8	0.858	20.2 ± 0.7	0.79 ± 0.028		0.35	0.014	19.3	0.76	
Width of roller 7.0 mm/0.28 in															