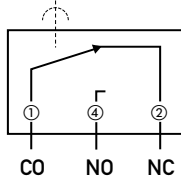


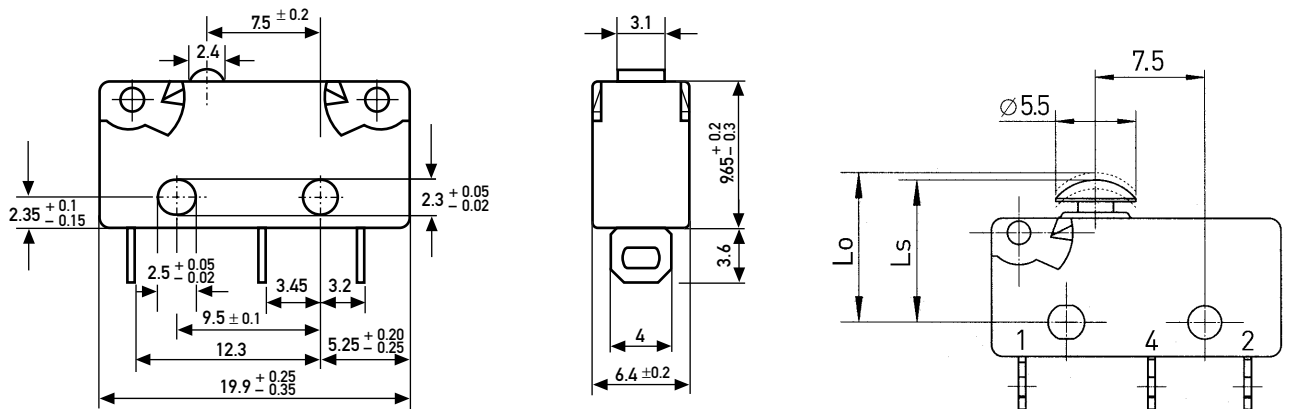
## Specifications

Housing	Thermoplastic
Plunger	Thermoplastic
Mechanism	Snap-action system with stainless steel tension spring
Functions	Change-over, NO, NC.
Contacts	Fine silver (Ag), or 10 µm Gold (Au), microprofile
Terminals	Solder, faston, PCB, side-facing PCB and 'PCB terminals with 0.1" pitch
Temperature range °C	Between -40°C and +85°C
Mechanical life	10 <sup>6</sup> cycles minimum
Protection	Enclosure – IP 40
Mounting	Side mounting or PCB
Actuators	Stainless steel, PA66–GF35
Contact carrier	CuZn or CuSn

Circuit diagram



Dimensions

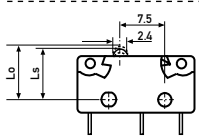
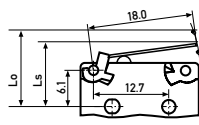
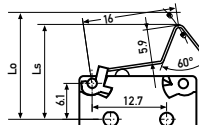
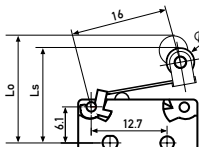


## Recommended maximum electrical ratings

	Voltage (VAC)	Resistive load (A)	Motor load (A)	Approvals ENEC (A)		Approvals UL (A)	
				(A)	(VAC)	(A)	(VAC)
X4F	250	12	6	12 (6)	1E4	250	12 125/250
X4G	250	6	3	6 (3)	5E4	250	6 125/250
X4C	250	3	2	3 (2)	5E4	250	3 125/250

Breaking capacities in the tables refer to silver contacts

Operating Characteristics

Actuator	Reference	Actuating Force		Release Force		Free Position		Operating Position		Movement Differential		Full Overtravel		
		Maximum (N)	(ozf)	Minimum (N)	(ozf)	Maximum (mm)	(in)	Maximum (mm)	(in)	Maximum (mm)	(in)	Maximum (mm)	(in)	
	X4F	3.3	11.869	0.55	1.978	8.8	0.35	8.4	$\left. \begin{matrix} +0.1 \\ -0.3 \end{matrix} \right\} 0.33$	$\left. \begin{matrix} +0.004 \\ -0.01 \end{matrix} \right\} 0.33$	0.2	0.008	7.7	0.3
	X4G	2.0	7.193	0.35	1.258	8.8	0.35	8.4			0.2	0.008	7.7	0.3
	X4C	0.75	2.697	0.13	0.467	8.8	0.35	8.4			0.2	0.008	7.7	0.3
	X4F	1.16	4.172	0.18	0.647	12.2	0.48	10.2 ±1.0	0.4 ±0.035	0.6	0.024	8.4	0.33	
	X4G	0.7	2.517	0.094	0.338	12.2	0.48	10.2 ±0.9	0.4 ±0.039	0.5	0.02	8.5	0.33	
	X4C	0.28	1.007	0.031	0.107	12.2	0.48	10.3 ±0.9	0.4 ±0.039	0.4	0.016	8.7	0.34	
Width of lever 4.0 mm/0.16 in														
	X4F	1.21	4.352	0.19	0.683	17.6	0.69	15.6 ±1.1	0.61 ±0.043	0.6	0.024	14	0.55	
	X4G	0.82	2.949	0.11	0.395	17.6	0.69	15.6 ±1.0	0.61 ±0.039	0.5	0.02	14.1	0.56	
	X4C	0.29	1.043	0.033	0.118	17.6	0.69	15.7 ±1.0	0.61 ±0.039	0.4	0.016	14.3	0.56	
Width of lever 4.0 mm/0.16 in														
	X4F	1.21	4.352	0.19	0.683	17.6	0.69	15.6 ±1.2	0.61 ±0.047	0.6	0.024	14.1	0.56	
	X4G	0.82	2.949	0.11	0.395	17.6	0.69	15.6 ±1.1	0.61 ±0.043	0.5	0.02	14.2	0.56	
	X4C	0.29	1.043	0.036	0.129	17.6	0.69	15.7 ±1.1	0.62 ±0.043	0.4	0.016	14.4	0.57	
Width of roller 4.0 mm/0.16 in														